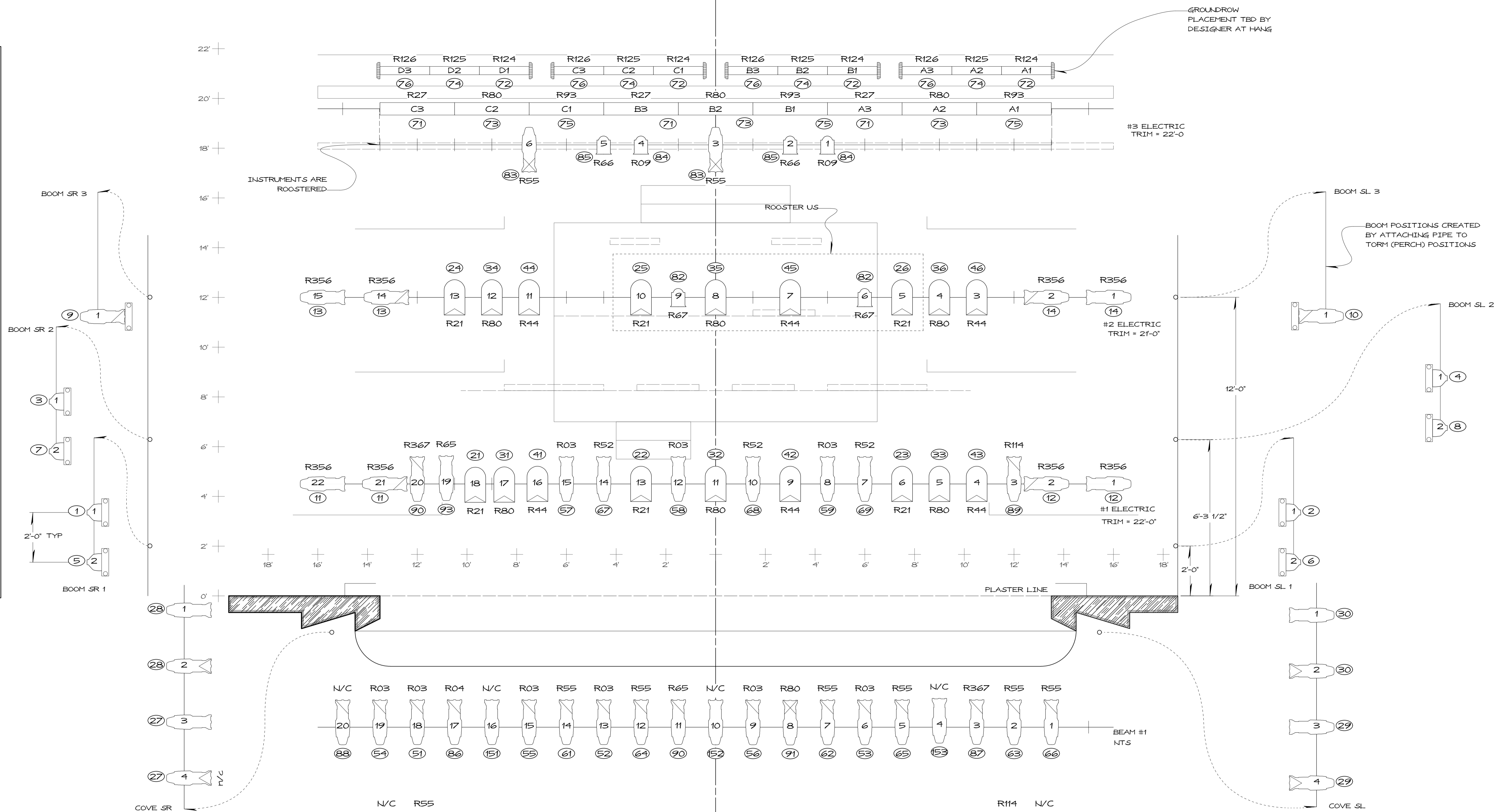


CYC
TRAVELER
#3 ELECTRIC
SKYLINE
BORDER 3
LEGS 3
PORTAL 3
SCENE 3
MID BLACK
#2 ELECTRIC
PORCH
BORDER 2/LEGS 2
PROJ. SCREEN
PORTAL 2
HARLEM
BORDER 1
LEGS 1
#1 ELECTRIC
PORTAL 1
MAIN DRAPE
GRAND BORDER



KEY


LEGEND

R356 - COLOR

5 - INSTRUMENT #

46 - CHANNEL

UNIVERSITY OF GEORGIA - DEPT OF THEATRE			
<b>LIGHT PLOT</b>			
SPUNK			PLATE
DESIGNER: MATT "GEORGE" GEORGESON			1
DIRECTOR: SCOTT-GILES			OF 1
MORTON	ALD: ERIN MULLER	DWG: MTG	
SCALE: 1/2" = 1'-0"	DATE: 3/19/10	REVISION: -	